

EP53A8XQI

All spacings have been set according to common PCB assembly practices. If necessary, these spacings can be modified according to specific manufacturing capabilities.

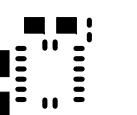
EP53A8XQI Critical Component Circuit ENPIRION P/N 04592 REV.A

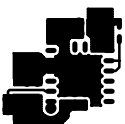
This layout shows the critical components and traces for minimum footprint with ENABLE tied to AVin. Alternate ENABLE configurations, and other small signal pins need to be connected and routed according to the customer application.

Gerber Format: RS274X, 3.5
Copyright Enpirion 2010

Solder mask and paste layer openings should be reviewed and optimized to meet customer PCB fabrication and assembly guidelines.







EP53A8XQI Critical Component Circuit
ENPIRION P/N 04592 REV.A

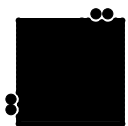
This layout shows the critical components and traces for minimum footprint with ENABLE tied to AVin. Alternate ENABLE configurations, and other small signal pins need to be connected and routed according to the customer application.

Gerber Format: RS274X, 3.5
Copyright Enpirion 2010

All spacings have been set according to common PCB assembly practices. If necessary, these spacings can be modified according to specific manufacturing capabilities.

Solder mask and paste layer openings should be reviewed and optimized to meet customer PCB fabrication and assembly guidelines.

EP53A8XQI Critical Component Circuit
ENPIRION P/N 04592 REV.A



This layout shows the critical components and traces for minimum footprint with ENABLE tied to AVin. Alternate ENABLE configurations, and other small signal pins need to be connected and routed according to the customer application.

Gerber Format: RS274X, 3.5
Copyright Enpirion 2010

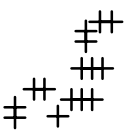
All spacings have been set according to common PCB assembly practices. If necessary, these spacings can be modified according to specific manufacturing capabilities.

Solder mask and paste layer openings should be reviewed and optimized to meet customer PCB fabrication and assembly guidelines.

ECN#	ISS.	REV.	DESCRIPTION	DATE	INT.	PGI#
.	1	A	INITIAL RELEASE	5-15-09	S	XXX
.
.
.
.

NOTES

MATERIAL: FR4 1 OZ COPPER EACH LAYER.
ALL HOLES PLATED THRU WITH 1 OZ COPPER MIN.
FINAL COPPER ON EXTERNAL LAYERS = 2 OZ. MINIMUM.

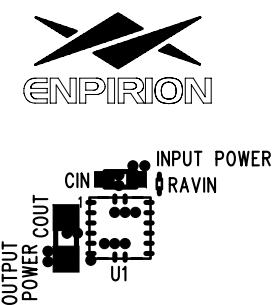


SIZE	QTY	SYM	PLATED	TOL
5	15	+	YES	+/-3.0

PLUGGING/FILLING OF 5mil HOLES IS ACCEPTABLE.

		ENPIRION			
DRAWN BY	DATE	P/N 04592,EP53A8XQI-CCC. BD. FAB			
S	3-24-09				
UNLESS OTHERWISE SPECIFIED TOLERANCES: .XX +/- .020 .XXX +/- .010 ANG. +/- 1 DEG.		SIZE	ISSUE	REV.	DRAWING NO.
		A	1	A	.
		SCALE: 2			SHEET: 1 OF 1

ECN#	ISS.	REV.	DESCRIPTION	DATE	INT.	PGI#
.	1	A	INITIAL RELEASE	5-15-09	S	XXX
.
.
.
.



EP53A8XQI

EP53A8XQI Critical Component Circuit
ENPIRION P/N 04592 REV.A

This layout shows the critical components and traces for minimum footprint with ENABLE tied to AVin. Alternate ENABLE configurations, and other small signal pins need to be connected and routed according to the customer application.

Gerber Format: RS274X, 3.5
Copyright Enpirion 2010

Solder mask and paste layer openings should be reviewed and optimized to meet customer PCB fabrication and assembly guidelines.

All spacings have been set according to common PCB assembly practices. If necessary, these spacings can be modified according to specific manufacturing capabilities.

		ENPIRION			
DRAWN BY	DATE	P/N 04592,EP53A8XQI-CCC. BD. ASSY TOP			
S	3-24-09				
		SIZE	ISSUE	REV.	DRAWING NO.
		A	1	A	.
		SCALE: 2			SHEET: 1 OF 1